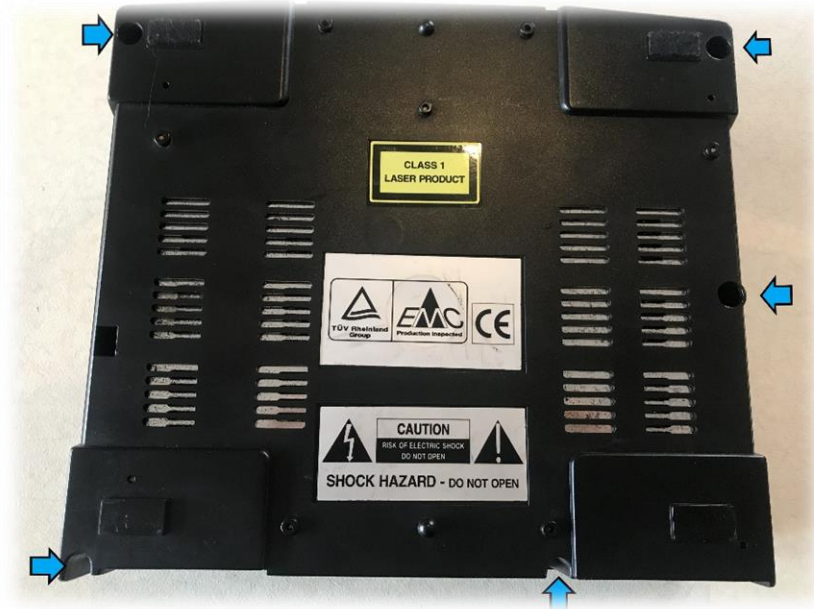


Rexus Nexus **Resatum** PSU: Installation and Set Up

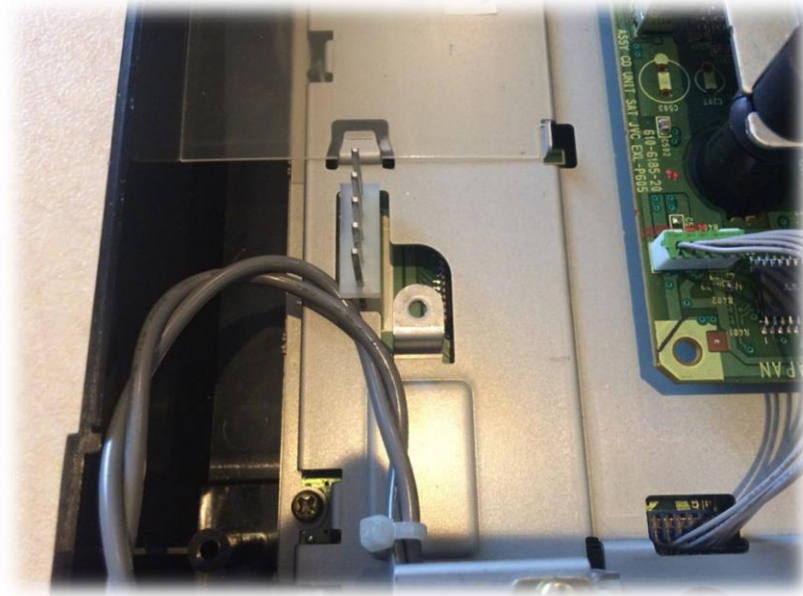
- 1- **Open up** your console by removing the 5 screws from the back.



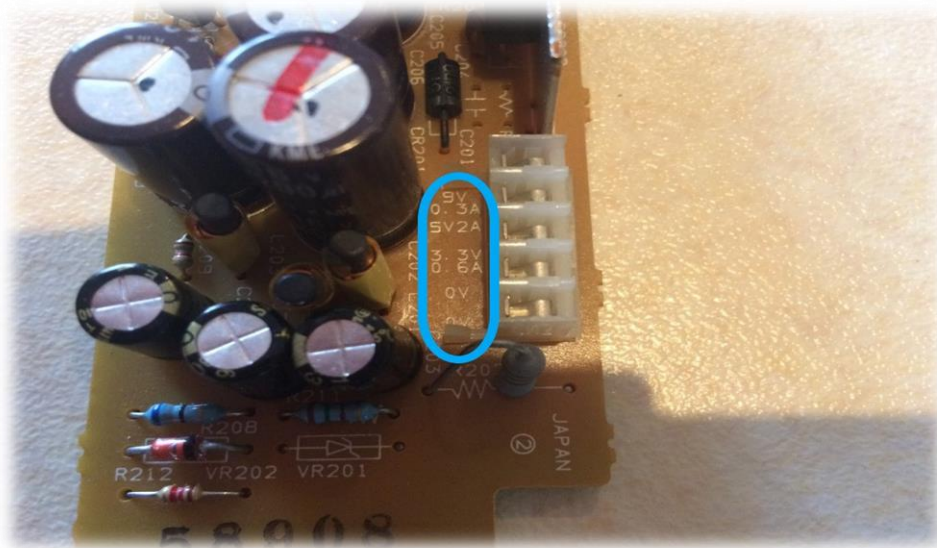
- 2- Unscrew the two/three screws that hold the original PSU together with the console shell (where the 110v or 220v- plug is connected).



- 3- Remove the top lid of your console, unscrew the stock PSU (it can be either attached to the top shell for the VA0 revision or to the console chassis for the VA1-15), and unplug all cables. **Remove the PSU.**



- 4- **Now you should identify** the Type of PSU that you have (types A, B or C). This will allow you to set up the appropriate voltages for your system.
- 5- Sometimes, the original PSU might have the **voltages written** on the **silkscreen**. Such as this VA5 (from bottom to top: GND, GND, 3.3v, 5v, 9v)



- 6- If your original PSU does not have the voltages on the silkscreen, you can either get a multimeter and measure them or follow some of the following methods:
- 7- If your console has a **T-shaped** plug at the back and has the original PSU attached to the top lid, you have a **VA0**. You can now jump to section 8.

If your console has an **8-shaped** plug, your PSU might have either **4 or 5 pins**.

If your console has **4 pins**, you have a revision between **VA6 and VA15**. You can now jump to section 8.

If your console has **5 pins**, it can be any revision from VA1 to VA15. If that is the case, check the serial number to know your exact revision.

Here below is an **example of a VA9**. In this case, the serial number is AD69041447. The first letters (or letter) are the manufacturer's code ('AD' in this case), the first number after the manufacturer is the year of production ('6', which refers to 1996), and the next number is the VA version ('9' in this case). So this machine is a **VA9**.



8- Now use the following table to match your system revision with the type of PSU that you have:

VA0: Type A (original PSU mounted on the top shell):

(PINS are GND, GND, 3.3v, 5v, not used, 9v)

VA1-VA5: Type B (5 pin PSU and longer than Type C):

(PINS are GND, GND, 3.3v, 5v, 9v)

VA6-VA15: Type C (PSU shorter than Type B). 5 PINS for PAL models, 4 PINS for NTSC models)

(PINS for NTSC are GND, GND, 5v, 5v) (PINS for PAL are GND, GND, 5v, 5v, 9 or 12v)

9- Set up the jumpers on your **ReSaturn PSU** according to the voltages that your PSU type requires:



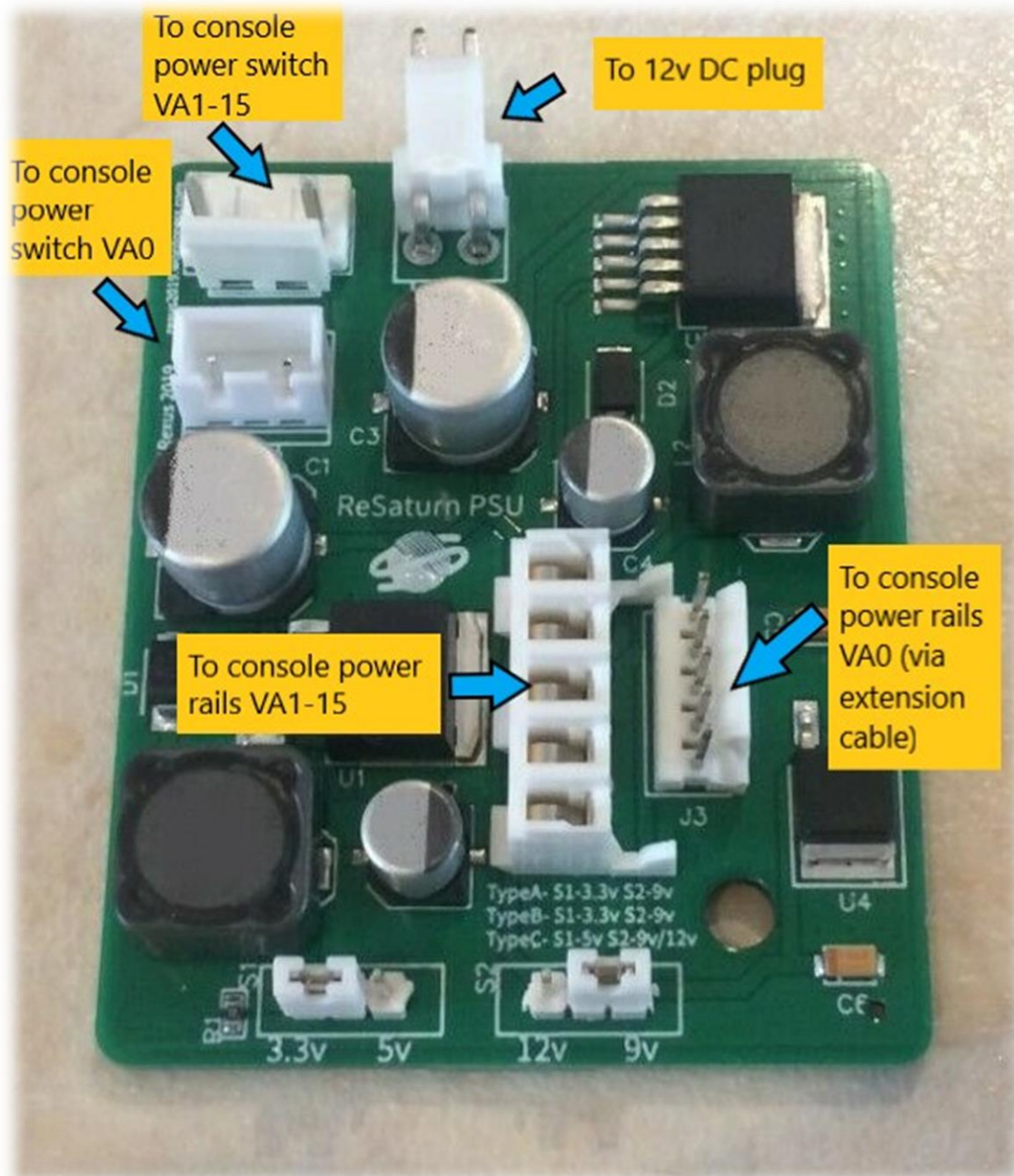
For **Type A**: Set jumper S1 to 3.3v and S2 to 9v

For **Type B**: Set jumper S1 to 3.3v and S2 to 9v

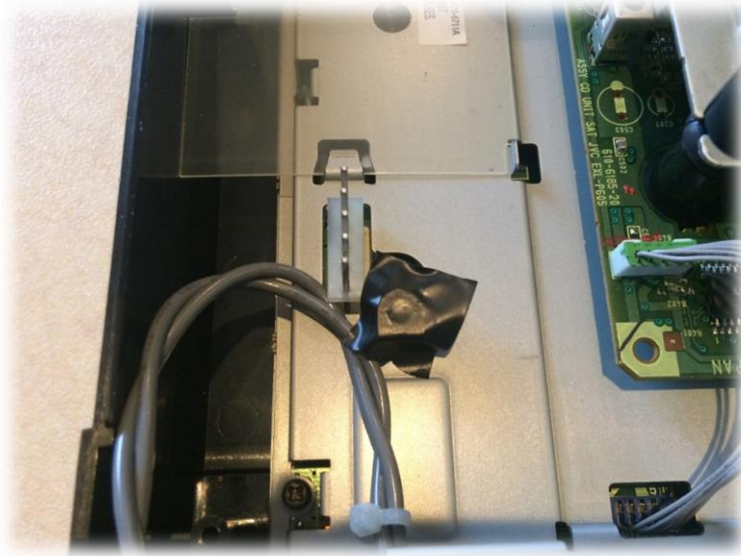
For **Type C**: Set jumper S1 to 5v and S2 to 9v or 12v

NB: If your Saturn has 4 pins (GND,GND,5v,5v), you can just leave the 9v jumper connected. If your Saturn is a Type C with 5 PINS, it is very likely that the voltages are written on the silkscreen (this will allow you to know whether you need 9v or 12v for S2).

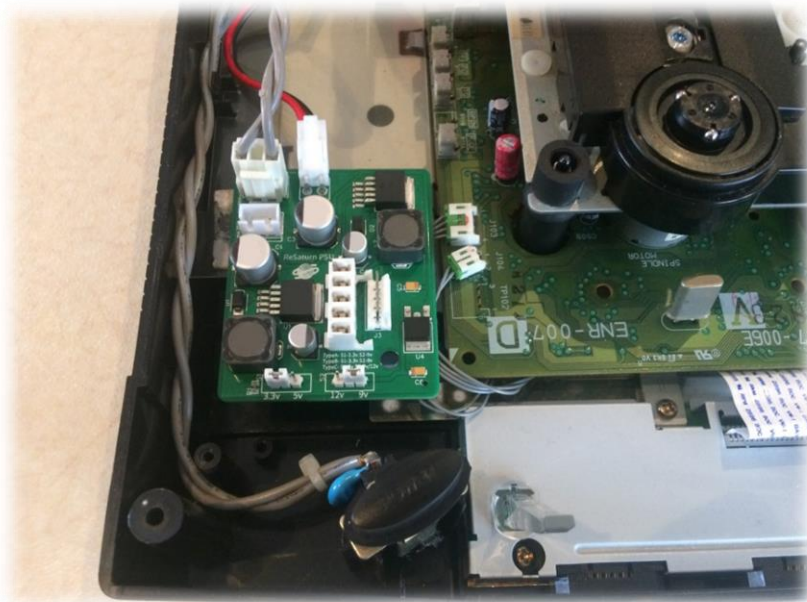
10- Now you're ready to plug the **ReSaturn PSU** as follows:



11- The **ReSaturn PSU** has a hole on the PCB to fix it on the chassis with the original screw. However, there are some chassis revisions that have this hole positioned in a slightly different way. If your revision does not align with the **ReSaturn PSU**, cover the small flap on the metal chassis with some electric tape. Just to make sure you don't have any short:



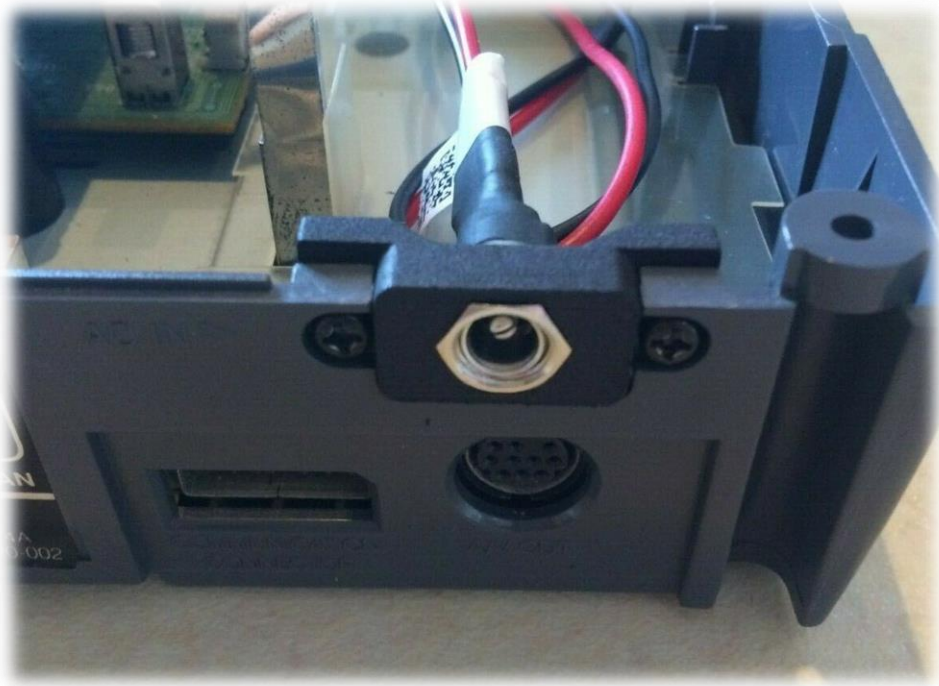
12-If you have a [VA1-15](#) revision, just plug the PSU into the rails, screw the DC socket at the back using the two screws from the original PSU and you're good to go:



13-If you have a [VA0](#), use the four bits of double sided tape (included) to attach the [ReSaturn PSU](#) on top of the plastic that isolates the stock PSU from the metal chassis (the [ReSaturn PSU](#) should sit on top of it as per the picture below). Above all, make sure there's no contact between the back of the PSU and the metal chassis.



14- Finally, plug a good quality 12v adapter (2.5*5.5mm positive centre tip, 4A or more) and enjoy.



Some suggestions on 12v AC adapters (links from different countries):

<https://www.ebay.es/itm/Leicke-Cargador-12V-5A-60W-para-Routers-12V-5A-60W-Clavija-5-5-2-5-mm/133413973416?hash=item1f1017ada8:g:qnUAAOSw-Npewrur>

<https://cpc.farnell.com/ideal-power/40xa065bc141200500-2-5/ac-dc-power-supply-12v-5a-2-5mm/dp/PW04346?st=Power adapters 12v 5A>

https://www.amazon.co.uk/12-Power-Supply-2-5mm-Stecker/dp/B001W3UYLY/ref=sr_1_10?dchild=1&keywords=leicke+psu&qid=1593092388&s=computers&sr=1-10

https://www.amazon.co.uk/CWT-Technology-Monitors-Equipment-CAD060121/dp/B004HCCVLI/ref=sr_1_1?dchild=1&keywords=genuine+cwt+12v+5a&qid=1590669903&sr=8-1

https://smile.amazon.de/dp/B001W3W12E/ref=cm_sw_em_r_mt_dp_U_vrg-EbRPKAV47

https://www.amazon.com/dp/B073QTNF9F/ref=emc_b_5_t

Rexus Nexus 2020